



Norwich Western Link Project Local Working Group

21st February 2017



Agenda

- 1.0 Welcome & Introductions
- 2.0 Purpose
- 3.0 Governance
 - 3.1 Terms of Reference
- 4.0 Background & Context
- 5.0 Current Technical Work
- 6.0 Looking forward
- 7.0 Q&A
- 8.0 AOB
- 9.0 Close

4.0 Background & Context

Background & Context

- NWL timeline
- NDR
- A47
- Food Hub
- Local Plan





Norwich Western Link Project Local Working Group

Mouchel update

Joanna Lyon Technical Director, Mouchel Transport Planning

David Wildman Technical Manager, Mouchel Transport Planning



5.0 Current Technical Work

This section includes:

- 5.1 Summary of current remit
- 5.2 Summary of the findings from the individual consultations
- 5.3 Discussion forum on objectives



5.1 Summary of Current Remit

Pre-2016

- 2005 – NDR progressed without western link
- 2014 - Mott MacDonald identified a range of route options (Western Link Road Scoping Study)
- 2014 - EDT committee resolved to revisit western section once NDR and A47 confirmed



July 2016

- Mouchel produced the NWL Technical Report (June 2016) which considered the overarching ‘strategic’ and ‘economic’ case for investment which included a series of recommendations to progress the western link
- EDT committee agreed recommendations and committed funding for next 12 months

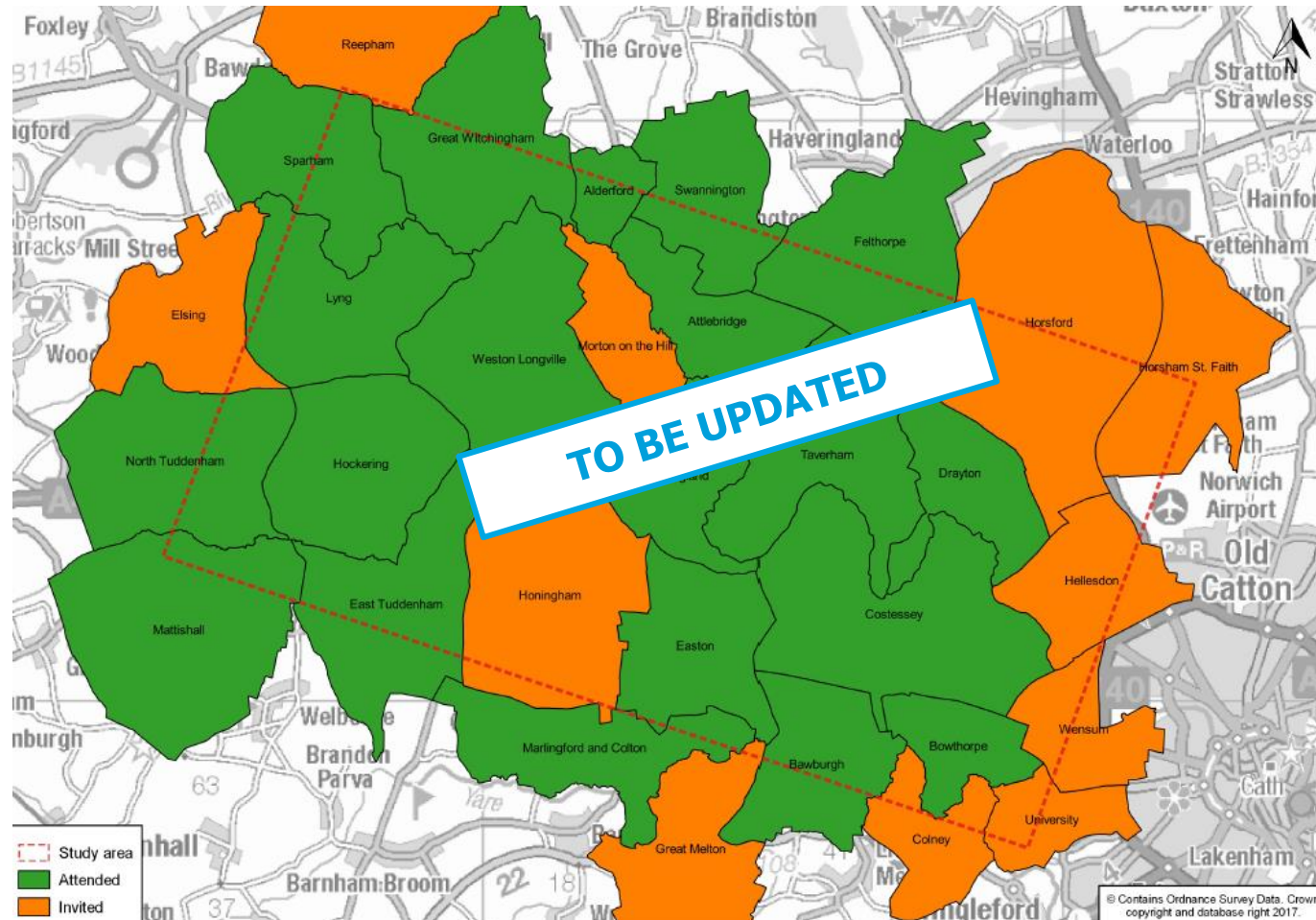


August 2016 – August 2017

- Mouchel commissioned to identify problems, agree objectives, develop options and assess feasibility / viability
- Findings to be reported to EDT committee in September 2017
- Key first step includes local consultation

5.2 Findings from consultations

- Local Council Engagement Session held November 2016
- Discussion topics:
 - What are the key concerns and opportunities within the area?
 - Do the draft objectives match...?
 - Would a link road help deliver these objectives?
 - Are there alternative options to a link road?
 - What are YOUR priorities for investment?



5.2 Findings from consultations

What are the key concerns and opportunities within the area?

Concerns	Opportunities
<ul style="list-style-type: none">• Rat running• HGV routing• HGV volumes• Longwater Interchange delays and safety• Increasing traffic on local road network post NDR• Network resilience• Limited Public transport provision• Limited Cycling & walking infrastructure• Future housing developments need advance infrastructure• Impact of commercial development• Costessey park & ride no longer goes into city	<ul style="list-style-type: none">• Give direct access to A47 from north and west• Improve access to employment e.g., Food Hub• Enhanced east & west connections• Support growth• Faster journeys to work• Improved access to tourism, business• Create jobs and attract new businesses• Find archeology and gives opportunity to learn• Connecting Businesses

5.2 Findings from consultations

- There was a general agreement that the project objectives broadly met the identified problems
- Particular comments included:
 - Quality of life
 - HGV reduction
 - Improving cycling & walking conditions
 - Journey time reliability
 - Safety
 - Improving access to Norwich Airport and Queen's Hills
 - Understanding Local Plan and potential growth
 - Protection of local environment/greenspace should be an objective

5.3 Discussion forum on objectives

Strategic objectives	Specific objectives
<ul style="list-style-type: none">• To support economic growth by:<ul style="list-style-type: none">• improving the efficiency of the transport network; and• enabling planned development of employment and commercial sites.• To support planned housing provision;• To improve strategic connectivity on the national road network;• To improve the resilience of the strategic and local road network;• To improve connectivity and accessibility for all modes; and• To improve the quality of life for local communities• To protect and enhance the local environment	<ul style="list-style-type: none">• To reduce congestion and delay;• To reduce journey times, and improve journey time reliability;• To provide traffic relief for the residential areas;• To reduce the number of HGVs using unsuitable minor roads;• To improve access to Norwich Airport from the west;• To improve access to Queen’s Hills and Longwater business park;• To improve access to existing and planned developments for all modes;• To reduce road accident casualties;• To reduce pedestrian and cycle casualties;• To improve conditions for people walking and cycling;• To encourage provision and use of orbital public transport routes; and• To improve access to green space.

6.0 Looking Forward

This section includes:

- 6.1 Technical Work to EDT (September 2017)
- 6.2 Work beyond EDT (long term delivery)



6.1 Technical work to EDT

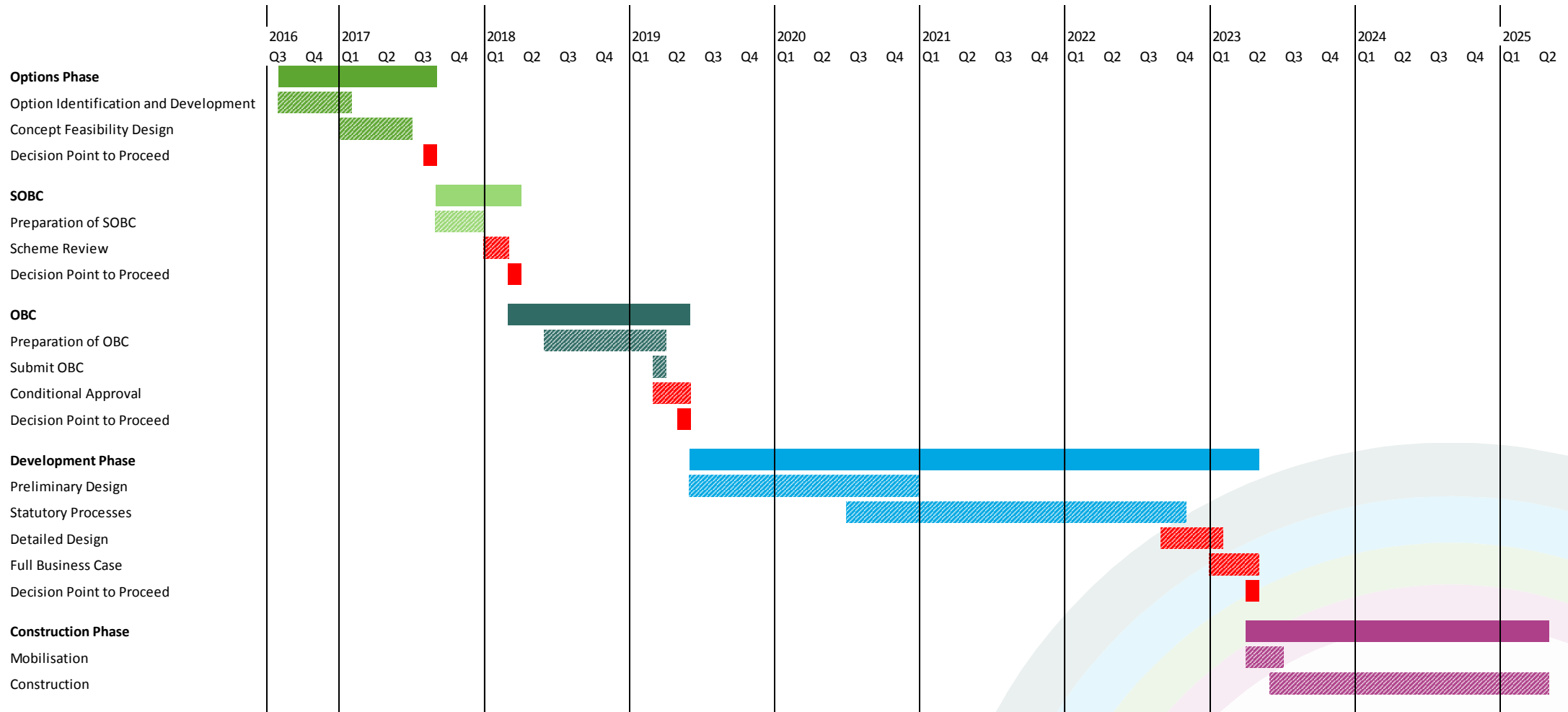
Various inter-linked workstreams...

- **Local Strategy & Consultation workstream** to help define the challenges and respond to local concerns
 - Views from initial consultation suggests that NWL would help meet objectives
 - Alternative suggestions included: improvements to the A47 and Longwater; traffic calming and positive route direction signage; localised widening; improvements to the HGV route
 - Priorities for investment highlighted as: Western Link; A47 dualling including Acle Straight; relieve congestion at hotspots; improve public transport services; HGV and local route improvements
 - Ongoing engagement as project continues
- **Funding opportunities and prioritisation framework workstream** to help review the different funding options
- **Business case requirement workstream** to outline the work required to develop a Strategic Outline Business Case and Outline Business Case

6.1 Technical work to EDT

- **Strategic Environmental Assessment workstream** to identify if a SEA is likely to be needed
- **Traffic modelling and appraisal workstream** to identify the likely impacts (in traffic terms) and indicative benefits of the proposed NWL, and assess impacts of potential growth scenarios
- **Scoping Habitats Regulations Assessment workstream** to identify the requirements for the appropriate assessment
- **Review of NDR mitigation measures workstream** to quality audit the proposals to help maximise benefit based on local consultation and other technical work
- **Review of Monitoring & Evaluation Plan workstream** to identify any gaps in planned data collection to support future stages associated with the NWL
- **Engineering concepts workstream** to identify acceptability of potential engineering solutions, including reviewing land ownership, environmental constraints, risks and cost

6.2 Work beyond EDT



Q&A, AOB, Thanks & Close

Tenjy.darcy@norfolk.gov.uk